



LA VISTA

ON THE GREEN





# The Building



With a prime location and a beautiful view that faces the 18th hole of the golf course designed by Nicklaus Design, you'll enjoy a panoramic view 24 hours a day from your apartment at LA VISTA on the Green.





# The Building

## Your Place in the World



Santa Maria Golf & Country Club is one of Panama's most exclusive developments: it's located in an area of 284 hectares (700 acres), the golf course was designed by Nicklaus Design and it's located next to the select community of Costa del Este in Panama City, Republic of Panama.

Its residents will enjoy quick and easy access to: the financial center of the capital city, the best shopping areas and to the Tocumen International Airport via the Corredor Sur.



# Conceptual Masterplan





# La Vista in Santa Maria

Position of La Vista within Santa Maria Golf & Country Club





# The Project



A Project Designed For Your Lifestyle



Nicklaus Design is the global brand created by golf legend Jack Nicklaus and is currently being managed by the Nicklaus family. The company is considered, worldwide, as the industry leader with 314 golf courses in 30 countries.





# The Apartments



- 3,229 sq.ft apartments.
- Double access to the apartment.
- Panoramic view from the den, living room, dining room, master bedroom and balcony.
- Comfortable kitchen with breakfast area.
- Master bedroom with an internal bathroom, walk-in closet, and panoramic view.
- 2 secondary bedrooms with bathroom and walk-in- closets.
- Family room
- Three parking spaces per apartment
- Central air conditioning in the social areas of the apartment.
- Maid's quarter with a full bathroom.
- Double paned glass windows with thermal and acoustic insulation.
- Fire sprinklers.



# Floor Plan

300 m<sup>2</sup>– 3,229 sq. ft



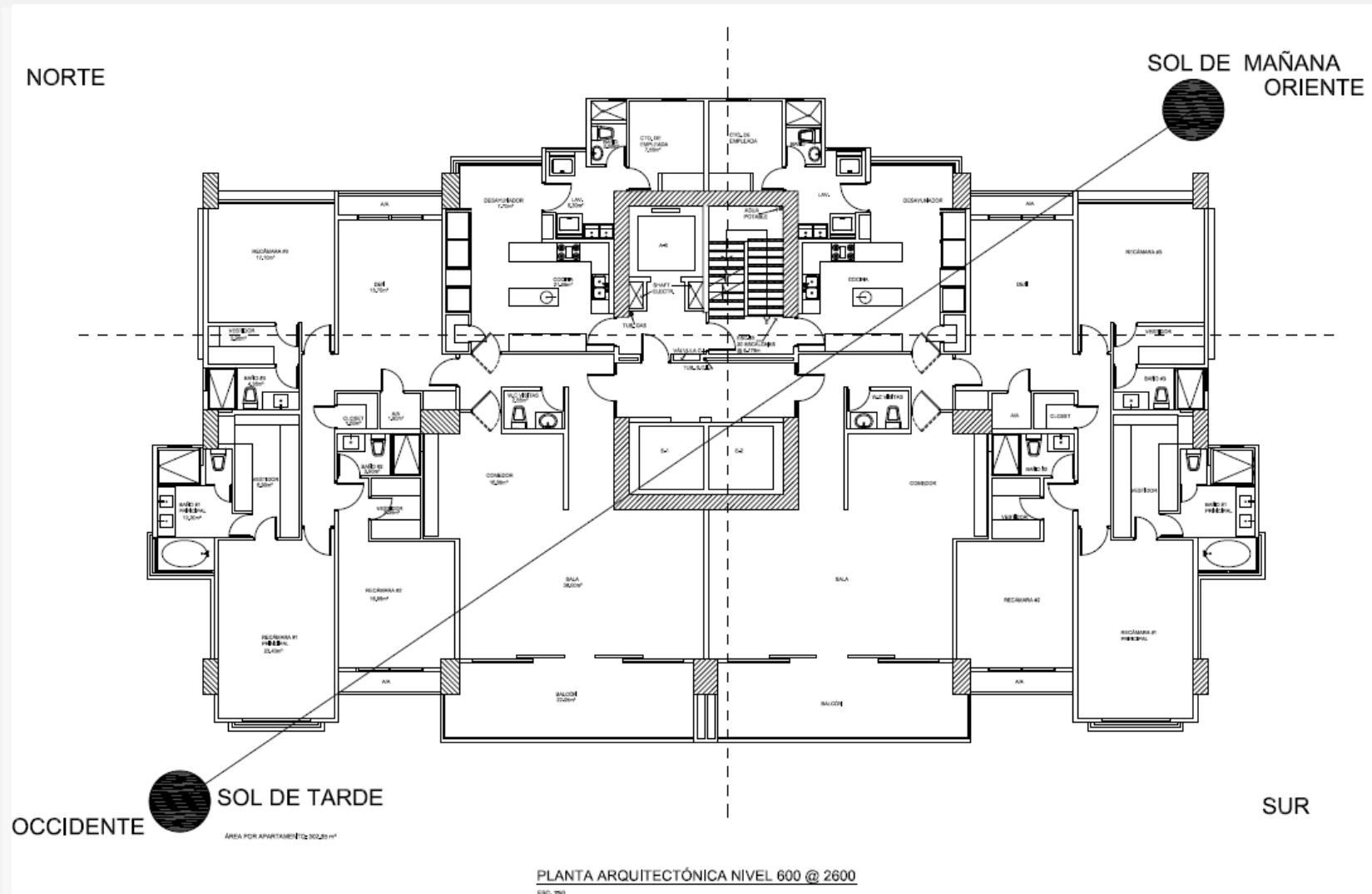


335 m<sup>2</sup> – 3,605 sq. ft





# Orientation of the Sun





# Floor Plan – Social area



LA VISTA  
ON THE GREEN



# Arrival Experience....



ON THE GREEN



# Social Area



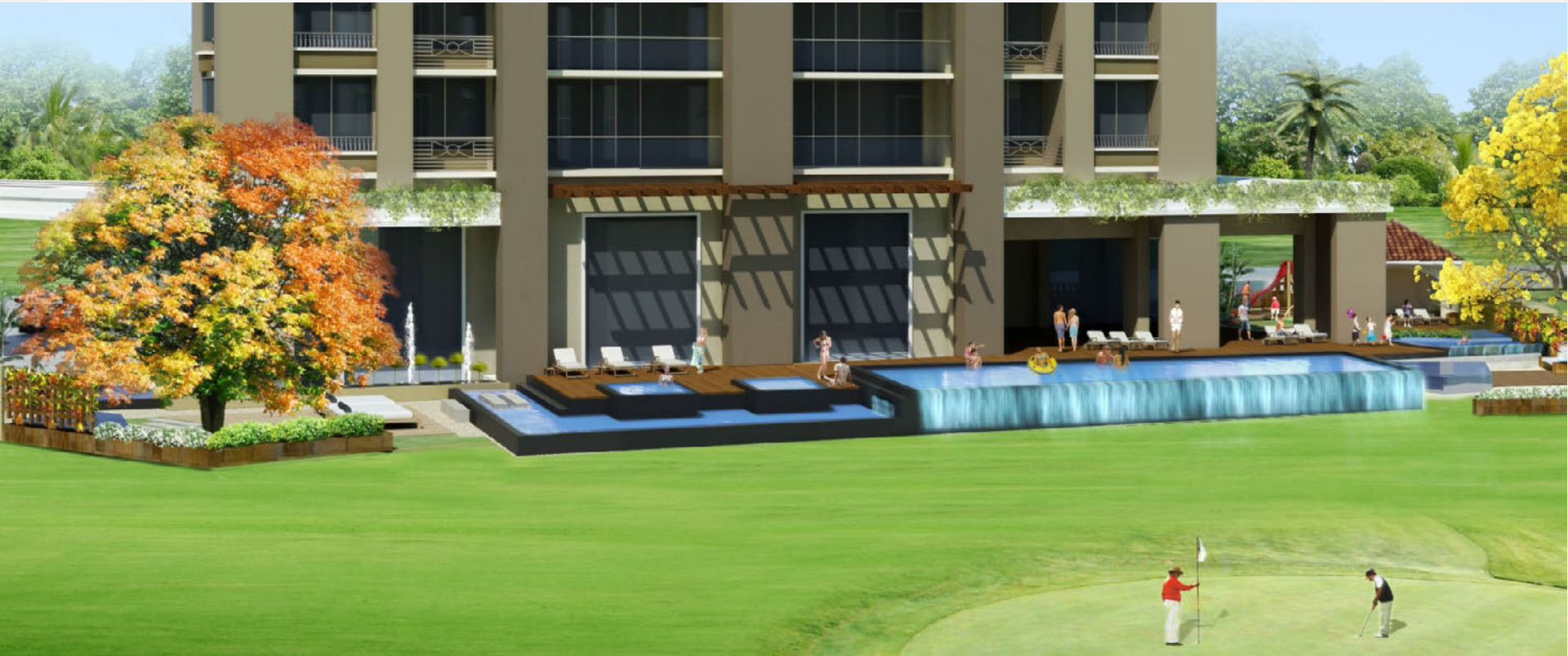
- Party Hall.
- Infinity pool for adults, with a view of the golf course.
- Children pool.
- Sun Deck.

- Gazebo.
- Saunas.
- Playground area.
- Open terrace .

LA VISTA  
ON THE GREEN



# Social Area



ON THE GREEN





# Golf Club



**SANTA MARÍA**  
GOLF & COUNTRY CLUB

- *Cost of membership \$30,210.00 (includes 7% tax)*
- *Monthly maintenance : \$347.75 (includes 7% tax)*
- *Broken down as follows:*
- *\$27,000.00 Cash guarantee deposit*
- *\$3,210.00 Membership enrollment fee (includes 7% tax)*
- *Membership included for holder, spouse and children under 25 years old, unmarried and living at home.*
- *Golf Club membership is for life as long as the client maintains residential property within Santa Maria. Meaning that if a member decides to sell his/her property, then he/she loses the right to remain as a member of the Golf Club. In that case, the guarantee deposit would be reimbursed as detailed in the membership contract.*
- *The maintenance fee is paid through a credit card deduction.*

LA VISTA  
ON THE GREEN





# Golf Club



**SANTA MARÍA**  
GOLF & COUNTRY CLUB

## ***Payment options***

### **Option 1**

\$34,062.00    Membership payment + prepayment of maintenance fee (includes 7% tax)

•\$3,852.00    Prepayment of annual maintenance fee - 12 months (includes 7% tax)  
(Saving \$321.00 of the regular monthly payments)

### **Option 2**

\$30,210.00    Payment of membership only. Maintenance fees are paid per month  
(\$347.75 includes 7% tax)

LA VISTA  
ON THE GREEN







# LA VISTA

---

ON THE GREEN

